

По вопросам продаж и поддержки обращайтесь:

Архангельск (8182)63-90-72  
Астана (7172)727-132  
Астрахань (8512)99-46-04  
Барнаул (3852)73-04-60  
Белгород (4722)40-23-64  
Брянск (4832)59-03-52  
Владивосток (423)249-28-31  
Волгоград (844)278-03-48  
Вологда (8172)26-41-59  
Воронеж (473)204-51-73  
Екатеринбург (343)384-55-89

Иваново (4932)77-34-06  
Ижевск (3412)26-03-58  
Казань (843)206-01-48  
Калининград (4012)72-03-81  
Калуга (4842)92-23-67  
Кемерово (3842)65-04-62  
Киров (8332)68-02-04  
Краснодар (861)203-40-90  
Красноярск (391)204-63-61  
Курск (4712)77-13-04  
Липецк (4742)52-20-81

Магнитогорск (3519)55-03-13  
Москва (495)268-04-70  
Мурманск (8152)59-64-93  
Набережные Челны (8552)20-53-41  
Нижний Новгород (831)429-08-12  
Новокузнецк (3843)20-46-81  
Новосибирск (383)227-86-73  
Омск (3812)21-46-40  
Орел (4862)44-53-42  
Оренбург (3532)37-68-04  
Пенза (8412)22-31-16

Пермь (342)205-81-47  
Ростов-на-Дону (863)308-18-15  
Рязань (4912)46-61-64  
Самара (846)206-03-16  
Санкт-Петербург (812)309-46-40  
Саратов (845)249-38-78  
Севастополь (8692)22-31-93  
Симферополь (3652)67-13-56  
Смоленск (4812)29-41-54  
Сочи (862)225-72-31  
Ставрополь (8652)20-65-13

Сургут (3462)77-98-35  
Тверь (4822)63-31-35  
Томск (3822)98-41-53  
Тула (4872)74-02-29  
Тюмень (3452)66-21-18  
Ульяновск (8422)24-23-59  
Уфа (347)229-48-12  
Хабаровск (4212)92-98-04  
Челябинск (351)202-03-61  
Череповец (8202)49-02-64  
Ярославль (4852)69-52-93

Единый адрес: [rbt@nt-rt.ru](mailto:rbt@nt-rt.ru) | <http://rta.nt-rt.ru>



**Motion Control Systems**












## SG SERIES PLANETARY GEARBOXES

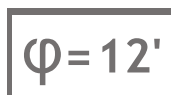


CONTENTS		Page
<b>STEPPER GEARBOXES</b>		
INTRODUCTION		4
<i>i=3</i>		
	➤ SG-P11-050-003-12-HH-712X	5
	➤ SG-P11-050-003-12-HH-782X	6
	➤ SG-P11-070-003-12-SM-286X	7
<i>i=5</i>		
	➤ SG-P11-050-005-12-HH-712X	8
	➤ SG-P11-050-005-12-HH-782X	9
	➤ SG-P11-050-005-12-SM-2861	10
	➤ SG-P11-070-005-12-SM-286X	11
<i>i=9</i>		
	➤ SG-P11-050-009-12-HH-712X	12
<i>i=10</i>		
	➤ SG-P11-070-010-12-HH-782X	13
	➤ SG-P11-070-010-12-SM-2861	14
	➤ SG-P11-090-010-12-SM-286X	15
<b>SERVO GEARBOXES</b>		
INTRODUCTION		18
<i>i=5</i>		
	➤ SG-P11-070-005-12-R2-0X00	19
	➤ SG-P11-090-005-12-R2-0750	20
	➤ SG-P11-090-005-12-R2-1000	21
<i>i=10</i>		
	➤ SG-P11-070-010-12-R2-0X00	22
	➤ SG-P11-090-010-12-R2-0400	23
	➤ SG-P11-090-010-12-R2-0750	24
	➤ SG-P11-120-010-12-R2-0750	25
	➤ SG-P11-120-010-12-R2-1000	26
<i>i=25</i>		
	➤ SG-P11-090-025-15-R2-0X00	27
	➤ SG-P11-120-025-15-R2-0750	28
	➤ SG-P11-120-025-15-R2-1000	29

# STEPPER GEARBOXES SG SERIES

## TABLE OF CONTENTS

SG SERIES STEPPER GEARBOXES	GEARBOX BODY (mm.)	MAXIMUM VELOCITY (min <sup>-1</sup> )	BACKLASH (arcmin)	EMERGENCY TORQUE (Nm)	MOTOR COUPLING (Flange Size)	TECHNICAL DATA DATI TECNICI (page/pagina)
<b><i>i=3</i></b>						
 SG-P11-050-003-12-HH-712X	60	4000	12'	28	NEMA 23	5
 SG-P11-050-003-12-HH-782X	60	4000	12'	28	60 mm.	6
 SG-P11-070-003-12-SM-286X	85	4000	12'	60	NEMA 34	7
<b><i>i=5</i></b>						
 SG-P11-050-005-12-HH-712X	60	5000	12'	30	NEMA 23	8
 SG-P11-050-005-12-HH-782X	60	5000	12'	30	60 mm.	9
 SG-P11-050-005-12-SM-2861	85	5000	12'	30	NEMA 34	10
 SG-P11-070-005-12-SM-286X	85	5000	12'	70	NEMA 34	11
<b><i>i=9</i></b>						
 SG-P11-050-009-12-HH-712X	60	6000	12'	28	NEMA 23	12
<b><i>i=10</i></b>						
 SG-P11-070-010-12-HH-782X	60	6000	12'	60	60 mm.	13
 SG-P11-070-010-12-SM-2861	85	6000	12'	60	NEMA 34	14
 SG-P11-090-010-12-SM-286X	85	6000	12'	150	NEMA 34	15



# SG-P11-050-003-12-HH-712X-00000

## PLANETARY GEARBOXES

SG 050

i=003

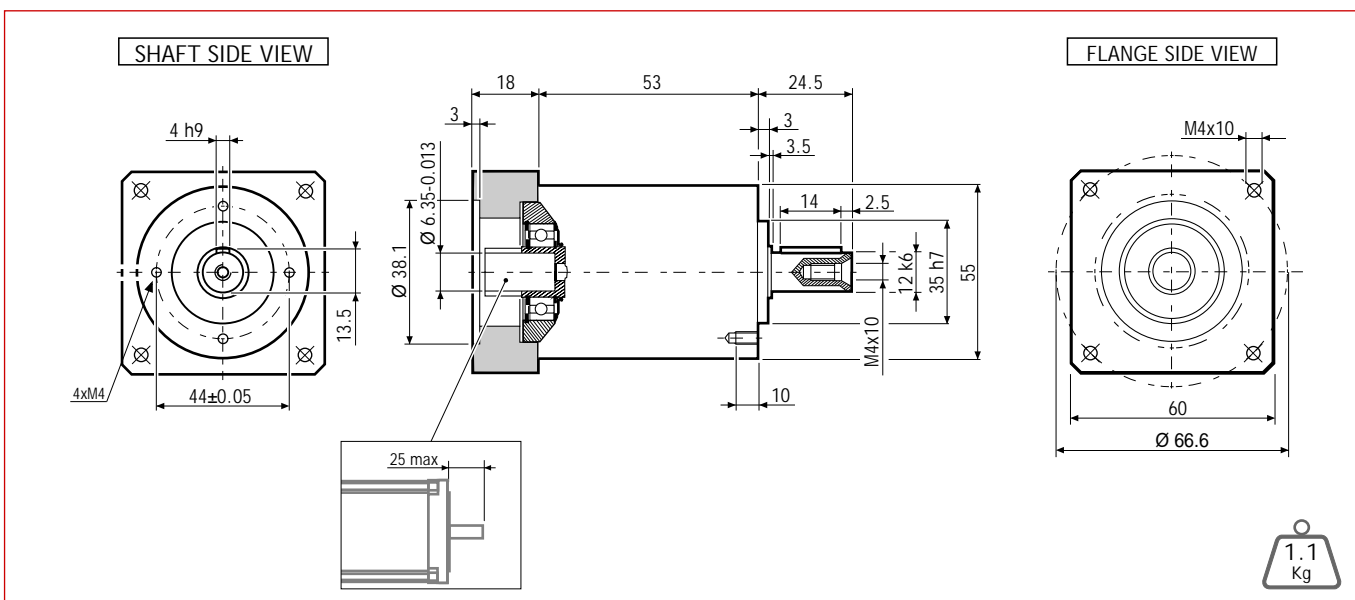
=12'

MADE IN ITALY

IP64



## Dimensions (Units:mm)



MODEL	Rated output torque [Nm]	Maximum acceleration output torque [Nm]	Emergency step output torque [Nm]	Backlash [arcmin]	Nominal input speed [min <sup>-1</sup> ]	Maximum momentary input speed [min <sup>-1</sup> ]	Torsional stiffness [Nm/arcmin]	Maximum radial force applying on output shaft [N]	Maximum axial force applying on output shaft [N]	Gear efficiency [%]	Gear moment of inertia [Kg·m <sup>2</sup> ]
SG-P11-050-003-12-HH-712X-00000	10	16	28	12'	3300	4000	0.9	500	600	97	0.07x10 <sup>-4</sup>

## Suggested motors

103-H7123 SERIES

103-H7126 SERIES

MOUNTING OPERATION MODE: ■ Tightening torque M=5 Nm ■ Locking bolt M4 ■ R.T.A. Quality Control

# SG-P11-050-003-12-HH-782X-00000

## PLANETARY GEARBOXES

SG 050

i=003

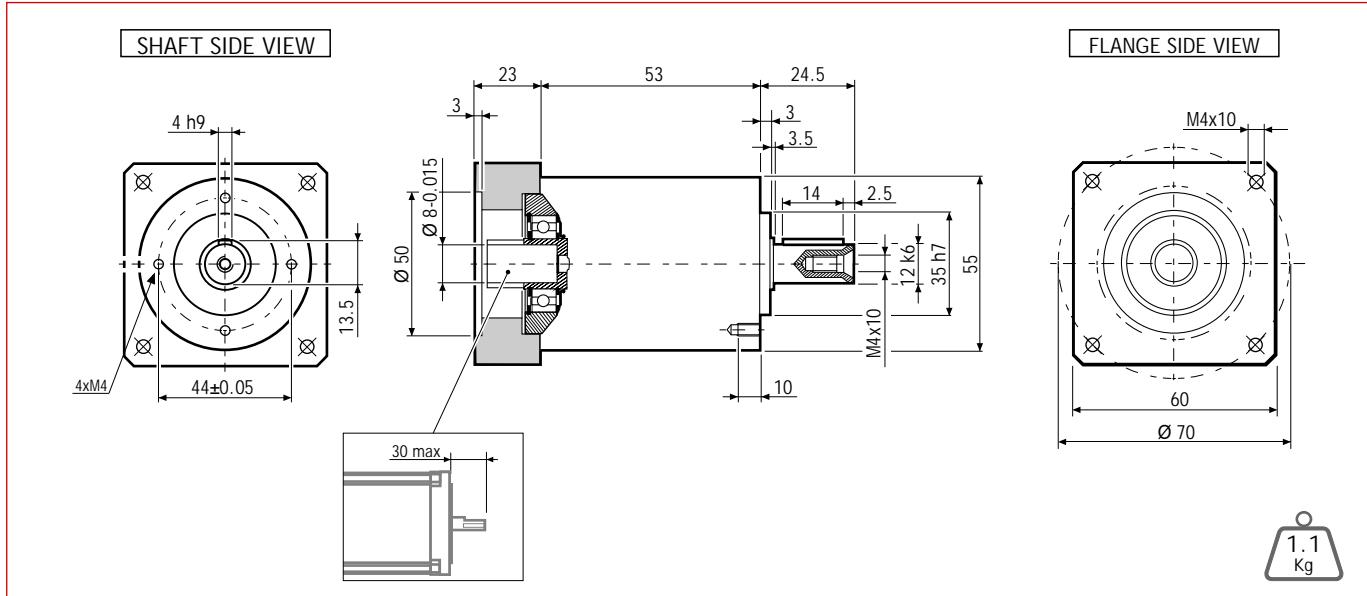
=12'

MADE IN ITALY

IP64



## Dimensions (Units:mm)



MODEL	Rated output torque [Nm]	Maximum acceleration output torque [Nm]	Emergency step output torque [Nm]	Backlash [arcmin]	Nominal input speed [min <sup>-1</sup> ]	Maximum momentary input speed [min <sup>-1</sup> ]	Torsional stiffness [Nm/arcmin]	Maximum radial force applying on output shaft [N]	Maximum axial force applying on output shaft [N]	Gear efficiency [%]	Gear moment of inertia [Kg <sup>m</sup> <sup>2</sup> ]
SG-P11-050-003-12-HH-782X-00000	10	16	28	12'	3300	4000	0.9	500	600	97	0.07x10 <sup>4</sup>

## Suggested motors



MOUNTING OPERATION MODE: ■ Tightening torque M=5 Nm ■ Locking bolt M4 ■ R.T.A. Quality Control

# SG-P11-070-003-12-SM-286X-00000

## PLANETARY GEARBOXES

SG 070

i=003

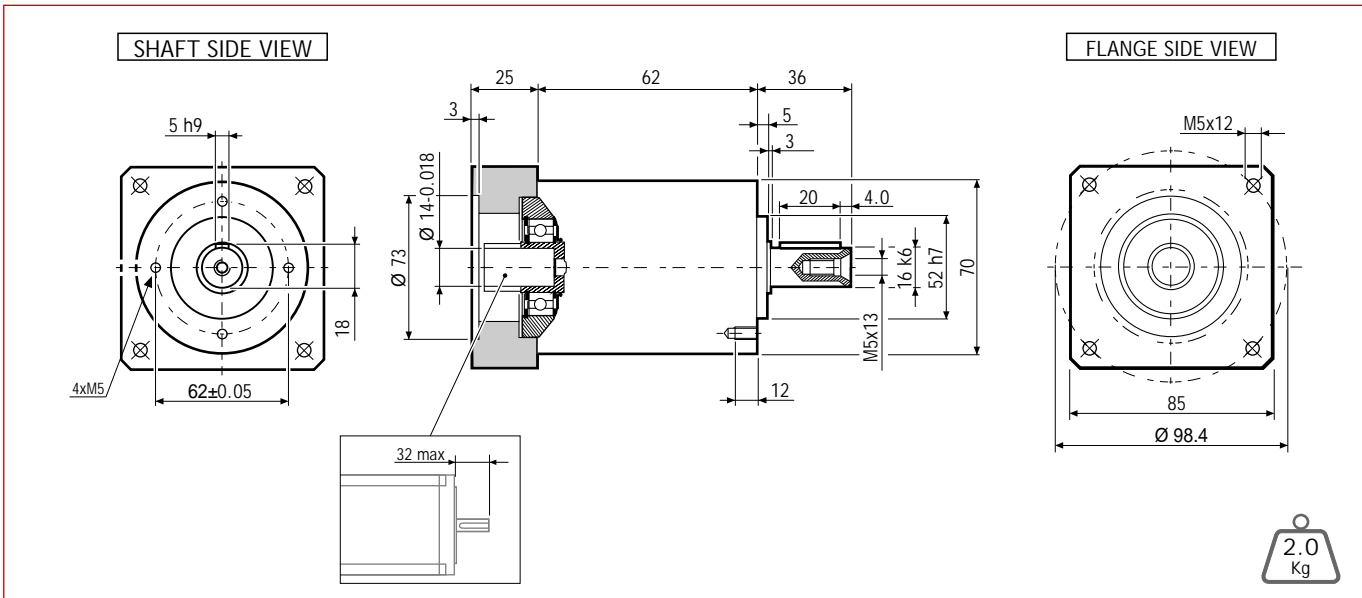
=12'

MADE IN ITALY

IP64



## Dimensions (Units:mm)



MODEL	Rated output torque [Nm]	Maximum acceleration output torque [Nm]	Emergency step output torque [Nm]	Backlash [arcmin]	Nominal input speed [min <sup>-1</sup> ]	Maximum momentary input speed [min <sup>-1</sup> ]	Torsional stiffness [Nm/arcmin]	Maximum radial force applying on output shaft [N]	Maximum axial force applying on output shaft [N]	Gear efficiency [%]	Gear moment of inertia [Kgm <sup>2</sup> ]
SG-P11-070-003-12-SM-286X-00000	18	30	60	12'	3300	4000	3	1300	1400	97	0.14x10 <sup>-4</sup>

## Suggested motors

SM 2862 SERIES

SM 2863 SERIES

MOUNTING OPERATION MODE: ■ Tightening torque M=5 Nm    ■ Locking bolt M4    ■ R.T.A. Quality Control

# SG-P11-050-005-12-HH-712X-00000

PLANETARY GEARBOXES

SG 050

i=005

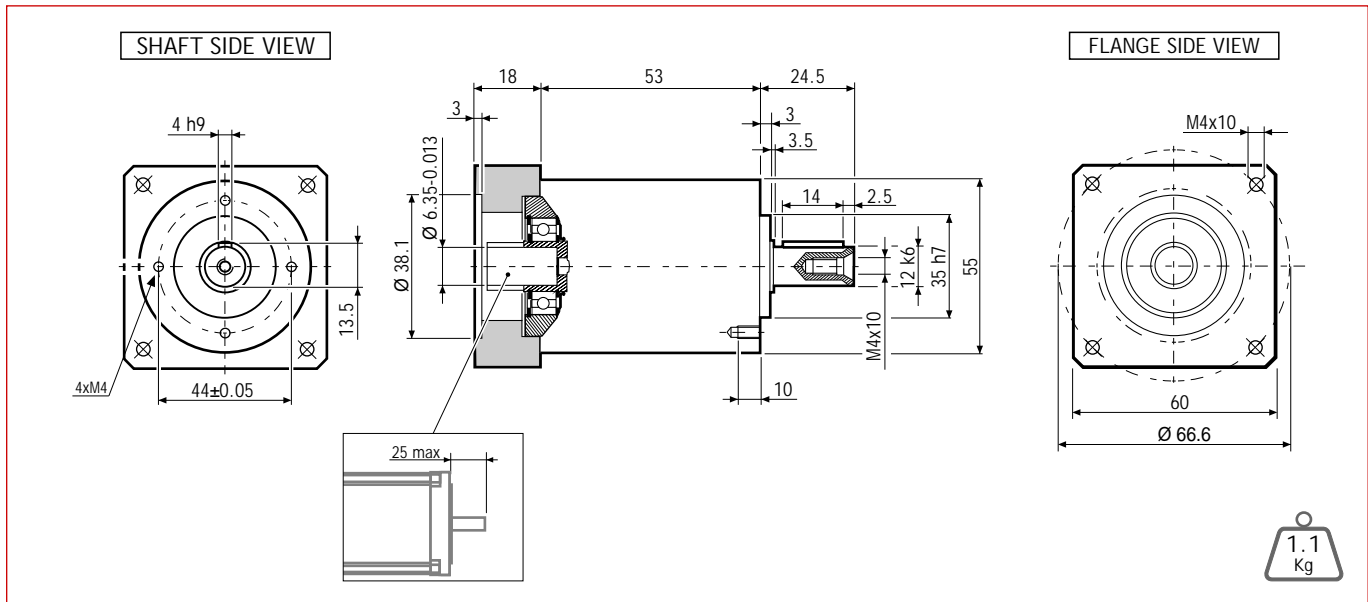
=12'

MADE IN ITALY

IP64



## Dimensions (Units:mm)



MODEL	Rated output torque [Nm]	Maximum acceleration output torque [Nm]	Emergency step output torque [Nm]	Backlash [arcmin]	Nominal input speed [min <sup>-1</sup> ]	Maximum momentary input speed [min <sup>-1</sup> ]	Torsional stiffness [Nm/arcmin]	Maximum radial force applying on output shaft [N]	Maximum axial force applying on output shaft [N]	Gear efficiency [%]	Gear moment of inertia [Kg·m <sup>2</sup> ]
SG-P11-050-005-12-HH-712X-00000	12	20	30	12'	3500	5000	0.9	500	600	97	0.05x10 <sup>4</sup>

## Suggested motors



103-H7123 SERIES



103-H7126 SERIES



MOUNTING OPERATION MODE: ■ Tightening torque M=5 Nm    ■ Locking bolt M4    ■ R.T.A. Quality Control



# SG-P11-050-005-12-HH-782X-00000

## PLANETARY GEARBOXES

SG 050

i=005

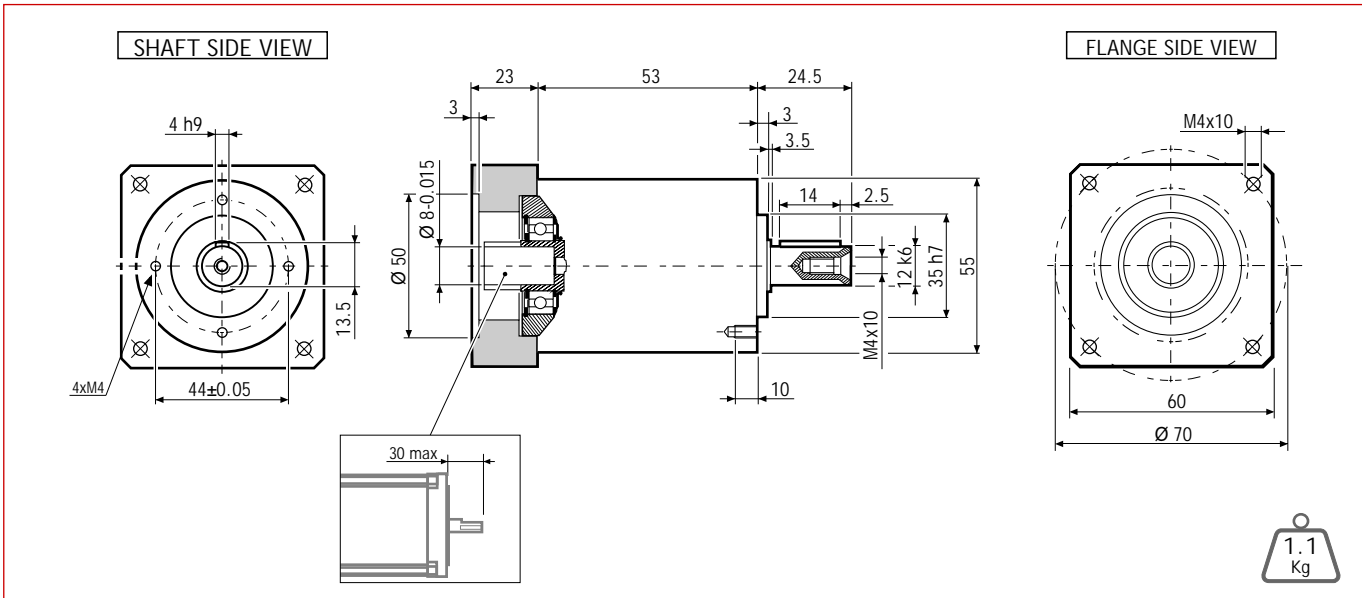
=12'

MADE IN ITALY

IP64



## Dimensions (Units:mm)



MODEL	Rated output torque [Nm]	Maximum acceleration output torque [Nm]	Emergency step output torque [Nm]	Backlash [arcmin]	Nominal input speed [min <sup>-1</sup> ]	Maximum momentary input speed [min <sup>-1</sup> ]	Torsional stiffness [Nm/arcmin]	Maximum radial force applying on output shaft [N]	Maximum axial force applying on output shaft [N]	Gear efficiency [%]	Gear moment of inertia [Kg·m <sup>2</sup> ]
SG-P11-050-005-12-HH-782X-00000	12	20	30	12'	3500	5000	0.9	500	600	97	0.05x10 <sup>-4</sup>

## Suggested motors



MOUNTING OPERATION MODE: ■ Tightening torque M=5 Nm ■ Locking bolt M4 ■ R.T.A. Quality Control



# SG-P11-050-005-12-SM-2861-00000

PLANETARY GEARBOXES

- SG 050
- i=005
- =12'
- MADE IN ITALY
- IP64

## Dimensions (Units:mm)

SHAFT SIDE VIEW

FLANGE SIDE VIEW

MODEL	Rated output torque [Nm]	Maximum acceleration output torque [Nm]	Emergency step output torque [Nm]	Backlash [arcmin]	Nominal input speed [min <sup>-1</sup> ]	Maximum momentary input speed [min <sup>-1</sup> ]	Torsional stiffness [Nm/arcmin]	Maximum radial force applying on output shaft [N]	Maximum axial force applying on output shaft [N]	Gear efficiency [%]	Gear moment of inertia [Kg·m <sup>2</sup> ]
SG-P11-050-005-12-SM-2861-00000	12	20	30	12'	3500	5000	0.9	500	600	97	0.07x10 <sup>4</sup>

## Suggested motors

SM 2861 SERIES

MOUNTING OPERATION MODE: ■ Tightening torque M=5 Nm ■ Locking bolt M4 ■ R.T.A. Quality Control

# SG-P11-070-005-12-SM-286X-00000

## PLANETARY GEARBOXES

SG 070

i=005

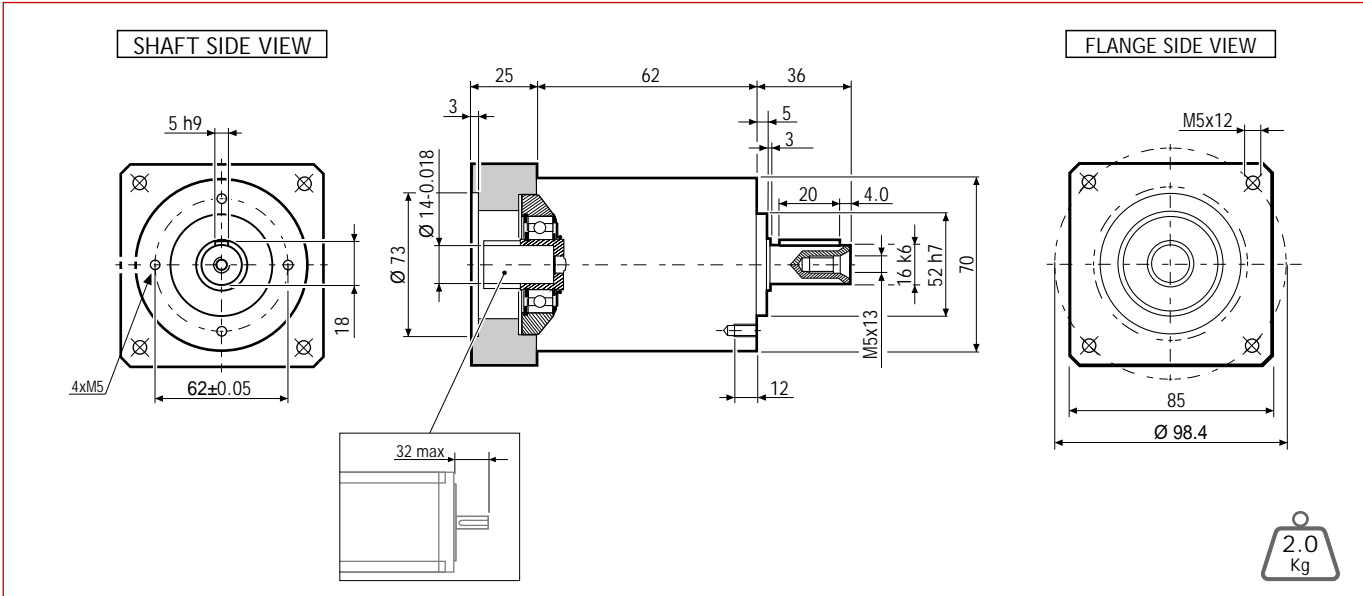
=12'

MADE IN ITALY

IP64



## Dimensions (Units:mm)



MODEL	Rated output torque [Nm]	Maximum acceleration output torque [Nm]	Emergency step output torque [Nm]	Backlash [arcmin]	Nominal input speed [min <sup>-1</sup> ]	Maximum momentary input speed [min <sup>-1</sup> ]	Torsional stiffness [Nm/arcmin]	Maximum radial force applying on output shaft [N]	Maximum axial force applying on output shaft [N]	Gear efficiency [%]	Gear moment of inertia [Kg·m <sup>2</sup> ]
SG-P11-070-005-12-SM-286X-00000	25	35	70	12'	3500	5000	3	1300	1400	97	0.09x10 <sup>-4</sup>

## Suggested motors

MOUNTING OPERATION MODE: ■ Tightening torque M=5 Nm

SM 2862 SERIES

■ Locking bolt M4

SM 2863 SERIES

■ R.T.A. Quality Control

# SG-P11-050-009-12-HH-712X-00000

## PLANETARY GEARBOXES

SG 050

i=009

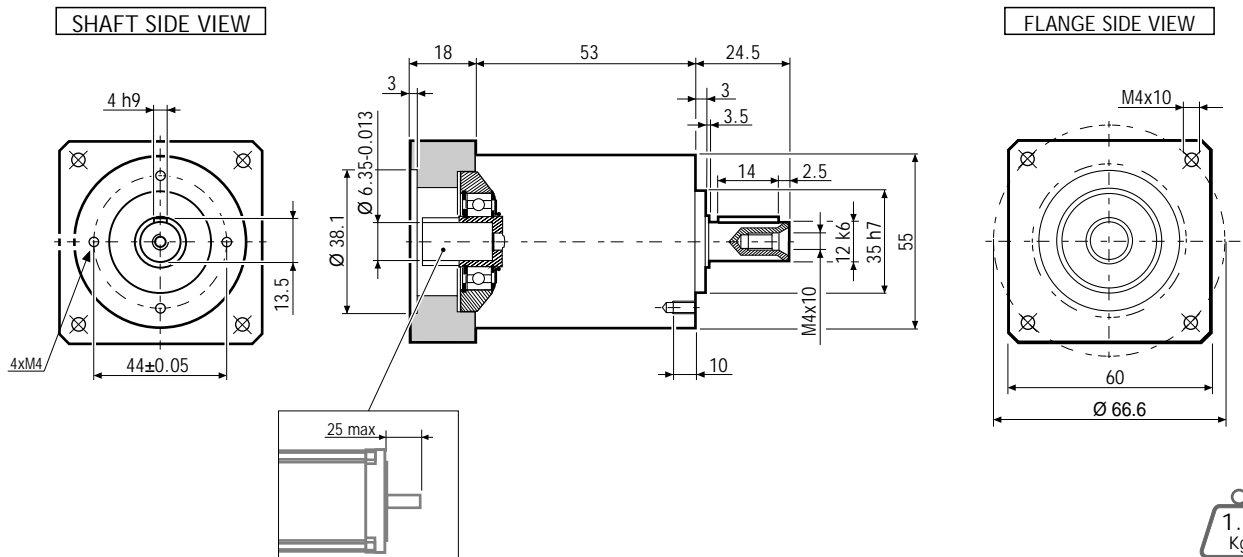
= 12'

MADE IN ITALY

IP64

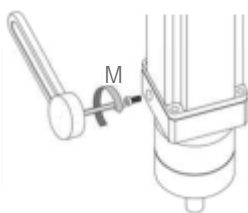


## Dimensions (Units:mm)



MODEL	Rated output torque [Nm]	Maximum acceleration output torque [Nm]	Emergency step output torque [Nm]	Backlash [arcmin]	Nominal input speed [min <sup>-1</sup> ]	Maximum momentary input speed [min <sup>-1</sup> ]	Torsional stiffness [Nm/arcmin]	Maximum radial force applying on output shaft [N]	Maximum axial force applying on output shaft [N]	Gear efficiency [%]	Gear moment of inertia [Kg·m <sup>2</sup> ]
SG-P11-050-009-12-HH-712X-00000	10	16	28	12'	4000	6000	0.9	500	600	97	0.04x10 <sup>-4</sup>

## Suggested motors



103-H7123 SERIES



103-H7126 SERIES



MOUNTING OPERATION MODE: ■ Tightening torque M=5 Nm ■ Locking bolt M4 ■ R.T.A. Quality Control

# SG-P11-070-010-12-HH-782X-00000

## PLANETARY GEARBOXES

SG 070

i=010

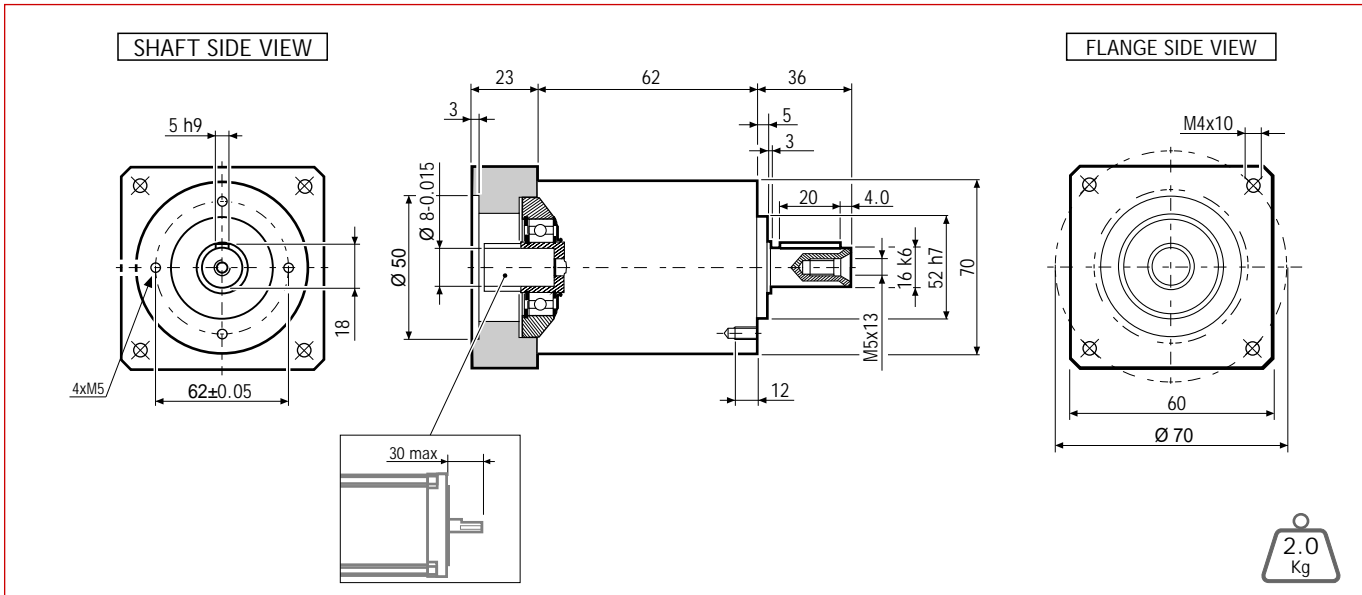
=12'

MADE IN ITALY

IP64



## Dimensions (Units:mm)



MODEL	Rated output torque [Nm]	Maximum acceleration output torque [Nm]	Emergency step output torque [Nm]	Backlash [arcmin]	Nominal input speed [min <sup>-1</sup> ]	Maximum momentary input speed [min <sup>-1</sup> ]	Torsional stiffness [Nm/arcmin]	Maximum radial force applying on output shaft [N]	Maximum axial force applying on output shaft [N]	Gear efficiency [%]	Gear moment of inertia [Kg·m <sup>2</sup> ]
SG-P11-070-010-12-HH-782X-00000	18	30	60	12'	4000	6000	3	1300	1400	97	0.06x10 <sup>-4</sup>

## Suggested motors

103-H7823 SERIES

MOUNTING OPERATION MODE: ■ Tightening torque M=5 Nm ■ Locking bolt M4 ■ R.T.A. Quality Control

# SG-P11-070-010-12-SM-2861-00000

## PLANETARY GEARBOXES

SG 070

i=010

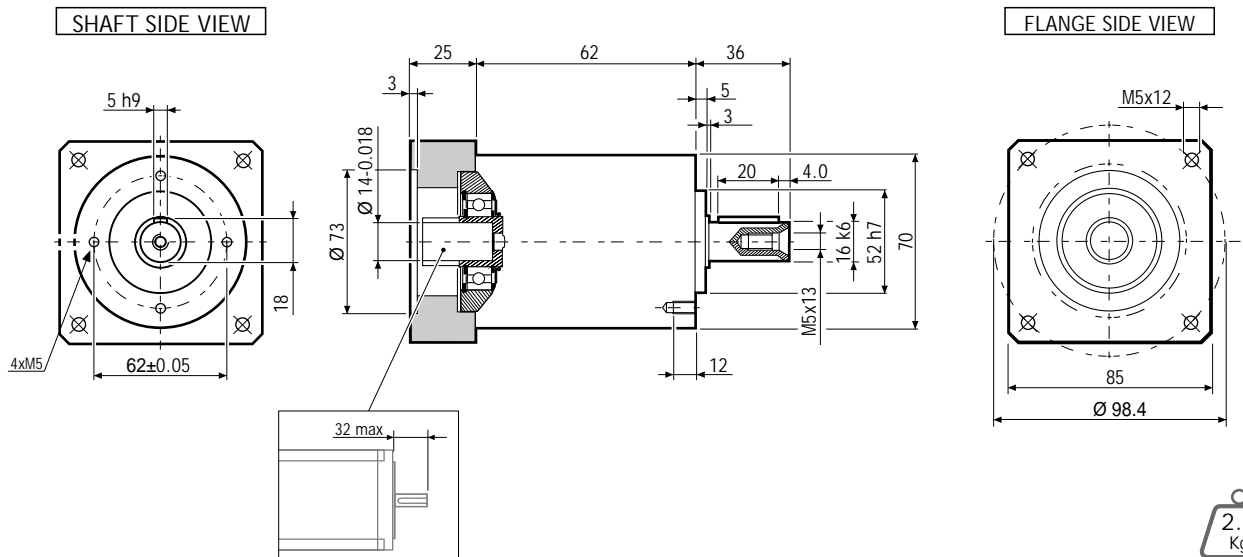
= 12'

MADE IN ITALY

IP64



## Dimensions (Units:mm)



2.0 Kg

MODEL	Rated output torque [Nm]	Maximum acceleration output torque [Nm]	Emergency step output torque [Nm]	Backlash [arcmin]	Nominal input speed [min <sup>-1</sup> ]	Maximum momentary input speed [min <sup>-1</sup> ]	Torsional stiffness [Nm/arcmin]	Maximum radial force applying on output shaft [N]	Maximum axial force applying on output shaft [N]	Gear efficiency [%]	Gear moment of inertia [Kg·m <sup>2</sup> ]
SG-P11-070-010-12-SM-2861-00000	18	30	60	12'	4000	6000	3	1300	1400	97	0.04x10 <sup>-4</sup>

## Suggested motors

SM 2861 SERIES

MOUNTING OPERATION MODE: ■ Tightening torque M=5 Nm ■ Locking bolt M4 ■ R.T.A. Quality Control

# SG-P11-090-010-12-SM-286X-00000

## PLANETARY GEARBOXES

SG 090

i=010

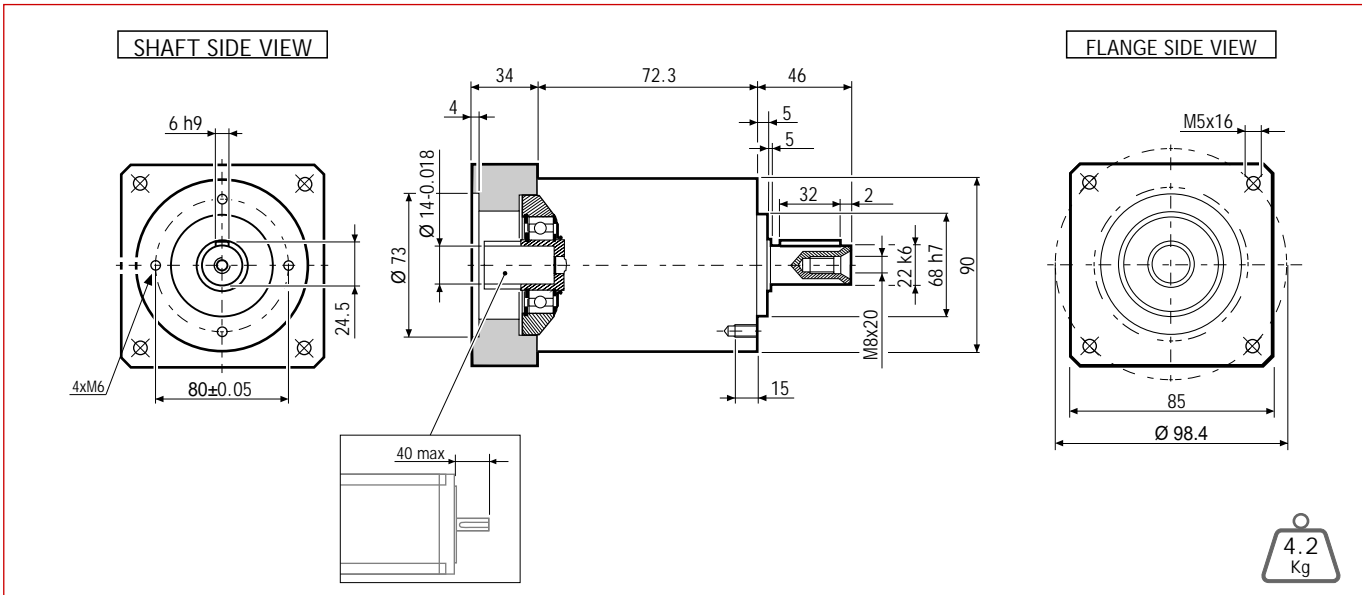
=12'

MADE IN ITALY

IP64



## Dimensions (Units:mm)



MODEL	Rated output torque [Nm]	Maximum acceleration output torque [Nm]	Emergency step output torque [Nm]	Backlash [arcmin]	Nominal input speed [min <sup>-1</sup> ]	Maximum momentary input speed [min <sup>-1</sup> ]	Torsional stiffness [Nm/arcmin]	Maximum radial force applying on output shaft [N]	Maximum axial force applying on output shaft [N]	Gear efficiency [%]	Gear moment of inertia [Kg·m <sup>2</sup> ]
SG-P11-090-010-12-SM-286X-00000	37	70	150	12'	4000	6000	9	2200	1900	97	0.35x10 <sup>-4</sup>


## Suggested motors

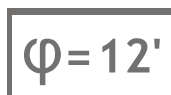
SM 2862 SERIES

SM 2863 SERIES

MOUNTING OPERATION MODE: ■ Tightening torque M=11 Nm ■ Locking bolt M6 ■ R.T.A. Quality Control

## SERVO GEARBOXES SG SERIES TABLE OF CONTENTS

SG SERIES STEPPER GEARBOXES		GEARBOX BODY (mm.)	MAXIMUM VELOCITY (min <sup>-1</sup> )	BACKLASH (arcmin)	EMERGENCY TORQUE (Nm)	MOTOR COUPLING (Flange Size)	TECHNICAL DATA DATI TECNICI (page/pagina)
<b><i>i=5</i></b>							
	SG-P11-070-005-12-R2-0X00	60	5000	12'	70	60 mm.	19
	SG-P11-090-005-12-R2-0750	80	4500	12'	160	80 mm.	20
	SG-P11-090-005-12-R2-1000	90	4500	12'	160	100 mm.	21
<b><i>i=10</i></b>							
	SG-P11-070-010-12-R2-0X00	60	6000	12'	60	60 mm.	22
	SG-P11-090-010-12-R2-0400	80	6000	12'	150	60 mm.	23
	SG-P11-090-010-12-R2-0750	80	6000	12'	150	80 mm.	24
	SG-P11-120-010-12-R2-0750	80	6000	12'	300	80 mm.	25
	SG-P11-120-010-12-R2-1000	100	5000	12'	300	100 mm.	26
<b><i>i=25</i></b>							
	SG-P11-090-025-15-R2-0X00	80	4500	12'	160	60 mm.	27
	SG-P11-120-025-15-R2-0750	100	4500	12'	360	80 mm.	28
	SG-P11-120-025-15-R2-1000	100	4500	12'	360	100 mm.	29





# SG-P11-070-005-12-R2-0X00-00000

## PLANETARY GEARBOXES

SG 070

i=005

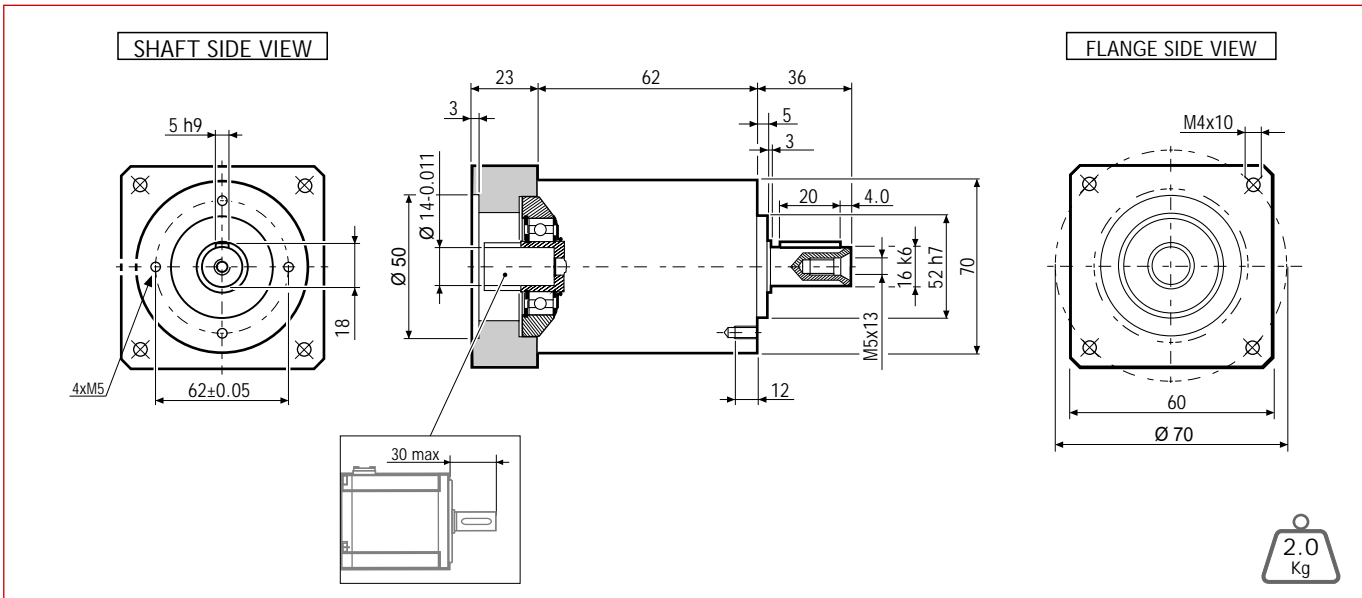
=12'

MADE IN ITALY

IP64



## Dimensions (Units:mm)



MODEL	Rated output torque [Nm]	Maximum acceleration output torque [Nm]	Emergency step output torque [Nm]	Backlash [arcmin]	Nominal input speed [min <sup>-1</sup> ]	Maximum momentary input speed [min <sup>-1</sup> ]	Torsional stiffness [Nm/arcmin]	Maximum radial force applying on output shaft [N]	Maximum axial force applying on output shaft [N]	Gear efficiency [%]	Gear moment of inertia [Kgm <sup>2</sup> ]
SG-P11-070-005-12-R2-0X00-00000	25	35	70	12'	3500	5000	3	1300	1400	97	0.09x10 <sup>-4</sup>

## Suggested motors

	<b>R2AA06020 SERIES</b> 	<b>R2AA06040 SERIES</b> 
<b>MOUNTING OPERATION MODE:</b> ■ Tightening torque M=5 Nm ■ Locking bolt M4 ■ R.T.A. Quality Control		

# SG-P11-090-005-12-R2-0750-00000

## PLANETARY GEARBOXES

SG 090

i=005

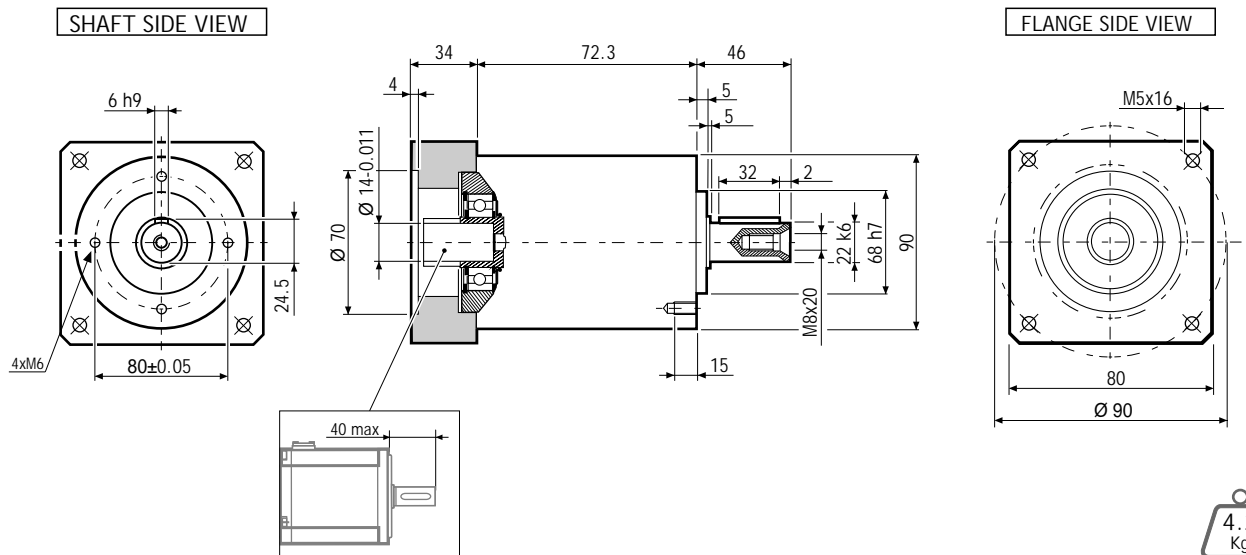
=12'

MADE IN ITALY

IP64

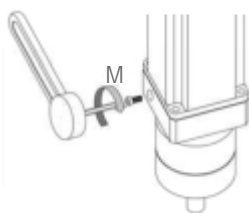


## Dimensions (Units:mm)



MODEL	Rated output torque [Nm]	Maximum acceleration output torque [Nm]	Emergency step output torque [Nm]	Backlash [arcmin]	Nominal input speed [min <sup>-1</sup> ]	Maximum momentary input speed [min <sup>-1</sup> ]	Torsional stiffness [Nm/arcmin]	Maximum radial force applying on output shaft [N]	Maximum axial force applying on output shaft [N]	Gear efficiency [%]	Gear moment of inertia [Kg·m <sup>2</sup> ]
SG-P11-090-005-12-R2-0750-00000	43	80	160	12'	3200	4500	9	2200	1900	97	0.47x10 <sup>-4</sup>

## Suggested motors



R2AA08075 SERIES



MOUNTING OPERATION MODE: ■ Tightening torque M=11 Nm ■ Locking bolt M6 ■ R.T.A. Quality Control

# SG-P11-090-005-12-R2-1000-00000

## PLANETARY GEARBOXES

SG 090

i=005

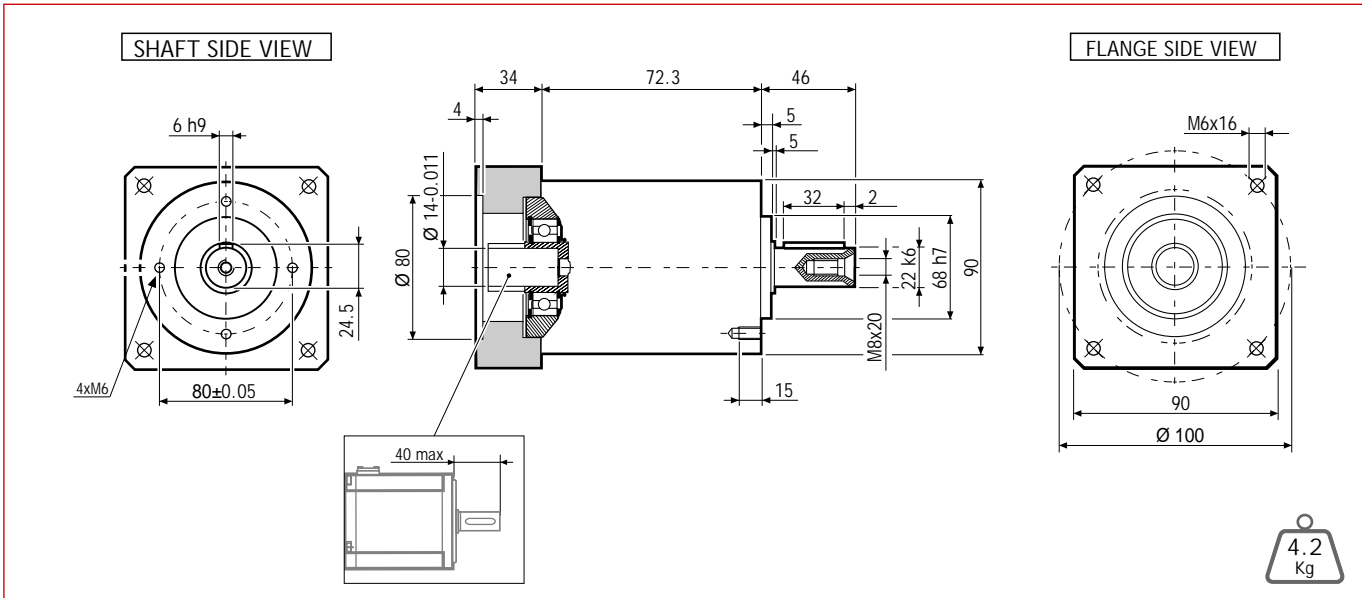
=12'

MADE IN ITALY

IP64



## Dimensions (Units:mm)



MODEL	Rated output torque [Nm]	Maximum acceleration output torque [Nm]	Emergency step output torque [Nm]	Backlash [arcmin]	Nominal input speed [min <sup>-1</sup> ]	Maximum momentary input speed [min <sup>-1</sup> ]	Torsional stiffness [Nm/arcmin]	Maximum radial force applying on output shaft [N]	Maximum axial force applying on output shaft [N]	Gear efficiency [%]	Gear moment of inertia [Kg <sup>m</sup> ²]
SG-P11-090-005-12-R2-1000-00000	43	80	160	12'	3200	4500	9	2200	1900	97	0.47x10 <sup>-4</sup>

## Suggested motors

R2AAB8100 SERIES

MOUNTING OPERATION MODE: ■ Tightening torque M=11 Nm ■ Locking bolt M6 ■ R.T.A. Quality Control

# SG-P11-070-010-12-R2-0X00-00000

## PLANETARY GEARBOXES

SG 070

i=010

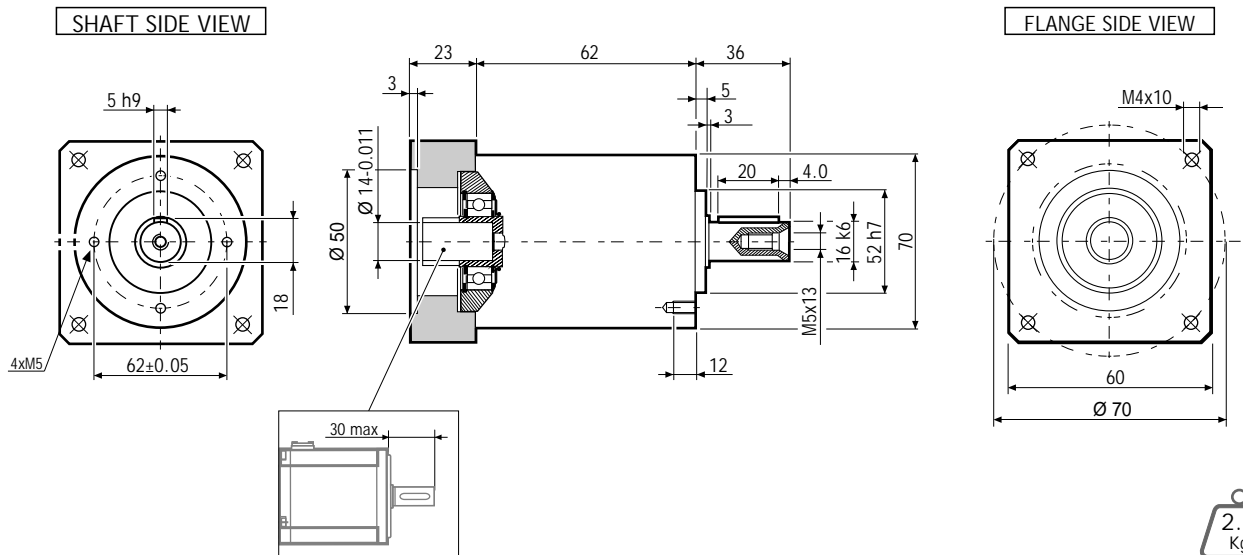
=12'

MADE IN ITALY

IP64

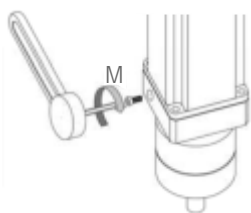


## Dimensions (Units:mm)



MODEL	Rated output torque [Nm]	Maximum acceleration output torque [Nm]	Emergency step output torque [Nm]	Backlash [arcmin]	Nominal input speed [min <sup>-1</sup> ]	Maximum momentary input speed [min <sup>-1</sup> ]	Torsional stiffness [Nm/arcmin]	Maximum radial force applying on output shaft [N]	Maximum axial force applying on output shaft [N]	Gear efficiency [%]	Gear moment of inertia [Kg·m <sup>2</sup> ]
SG-P11-070-010-12-R2-0X00-00000	18	30	60	12'	4000	6000	3	1300	1400	97	0.06x10 <sup>-4</sup>

## Suggested motors



R2AA06020 SERIES



R2AA06040 SERIES



MOUNTING OPERATION MODE: ■ Tightening torque M=5 Nm ■ Locking bolt M4 ■ R.T.A. Quality Control

# SG-P11-090-010-12-R2-0400-00000

## PLANETARY GEARBOXES

SG 090

i=010

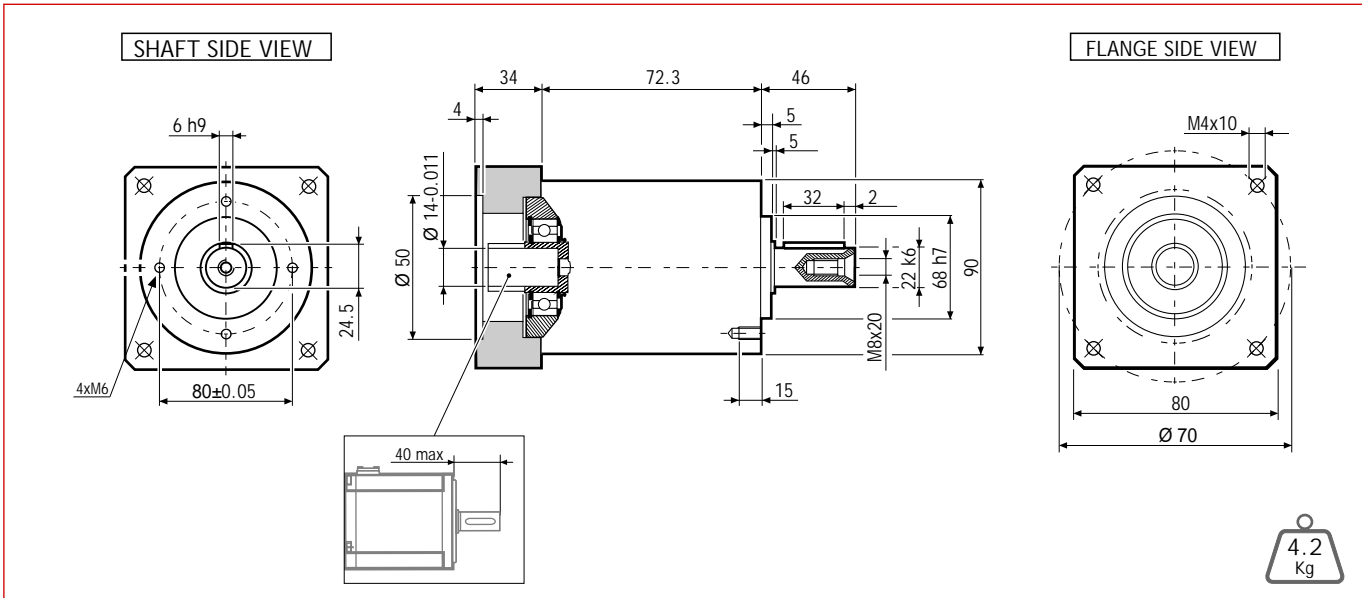
=12'

MADE IN ITALY

IP64



## Dimensions (Units:mm)



MODEL	Rated output torque [Nm]	Maximum acceleration output torque [Nm]	Emergency step output torque [Nm]	Backlash [arcmin]	Nominal input speed [min <sup>-1</sup> ]	Maximum momentary input speed [min <sup>-1</sup> ]	Torsional stiffness [Nm/arcmin]	Maximum radial force applying on output shaft [N]	Maximum axial force applying on output shaft [N]	Gear efficiency [%]	Gear moment of inertia [Kg <sup>m</sup> ²]
SG-P11-090-010-12-R2-0400-00000	37	70	150	12'	4000	6000	9	2200	1900	97	0.35x10 <sup>-4</sup>

## Suggested motors

R2AA06040 SERIES

MOUNTING OPERATION MODE: ■ Tightening torque M=11 Nm    ■ Locking bolt M6    ■ R.T.A. Quality Control

# SG-P11-090-010-12-R2-0750-00000

## PLANETARY GEARBOXES

SG 090

i=010

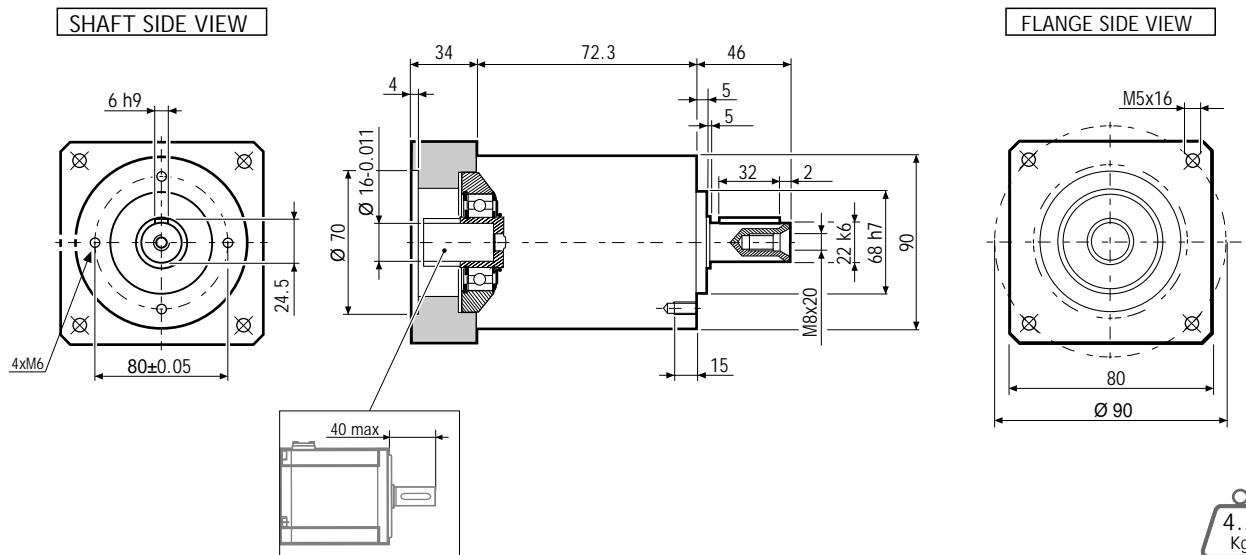
=12'

MADE IN ITALY

IP64

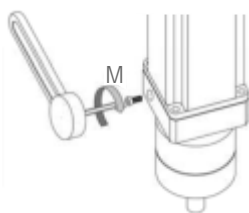


## Dimensions (Units:mm)



MODEL	Rated output torque [Nm]	Maximum acceleration output torque [Nm]	Emergency step output torque [Nm]	Backlash [arcmin]	Nominal input speed [min <sup>-1</sup> ]	Maximum momentary input speed [min <sup>-1</sup> ]	Torsional stiffness [Nm/arcmin]	Maximum radial force applying on output shaft [N]	Maximum axial force applying on output shaft [N]	Gear efficiency [%]	Gear moment of inertia [Kg·m <sup>2</sup> ]
SG-P11-090-010-12-R2-0750-00000	37	70	150	12'	4000	6000	9	2200	1900	97	0.35x10 <sup>-4</sup>

## Suggested motors



R2AA08075 SERIES



MOUNTING OPERATION MODE: ■ Tightening torque M=11 Nm ■ Locking bolt M6 ■ R.T.A. Quality Control

# SG-P11-120-010-12-R2-0750-00000

## PLANETARY GEARBOXES

SG 120

i=010

=12'

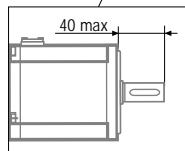
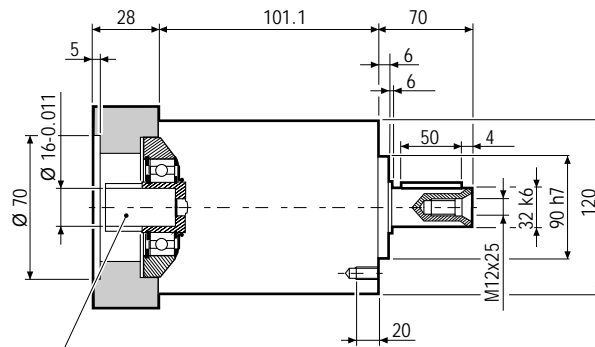
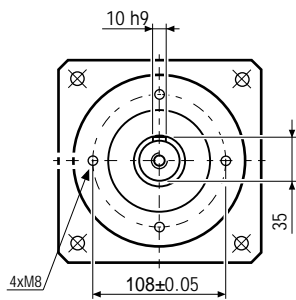
MADE IN ITALY

IP64

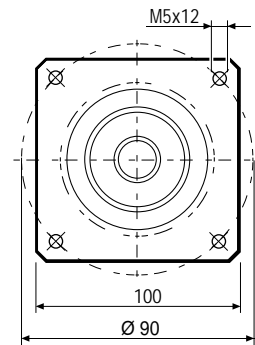


## Dimensions (Units:mm)

SHAFT SIDE VIEW

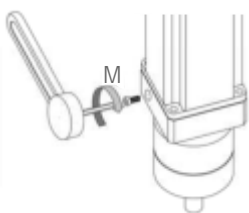


FLANGE SIDE VIEW



MODEL	Rated output torque [Nm]	Maximum acceleration output torque [Nm]	Emergency step output torque [Nm]	Backlash [arcmin]	Nominal input speed [min <sup>-1</sup> ]	Maximum momentary input speed [min <sup>-1</sup> ]	Torsional stiffness [Nm/arcmin]	Maximum radial force applying on output shaft [N]	Maximum axial force applying on output shaft [N]	Gear efficiency [%]	Gear moment of inertia [Kg·m <sup>2</sup> ]
SG-P11-120-010-12-R2-0750-00000	95	160	300	12'	3500	5000	25	3500	3000	97	0.49x10 <sup>-4</sup>

## Suggested motors



R2AA08075 SERIES



MOUNTING OPERATION MODE: ■ Tightening torque M=11 Nm ■ Locking bolt M6 ■ R.T.A. Quality Control



# SG-P11-120-010-12-R2-1000-00000

## PLANETARY GEARBOXES

SG 120

i=010

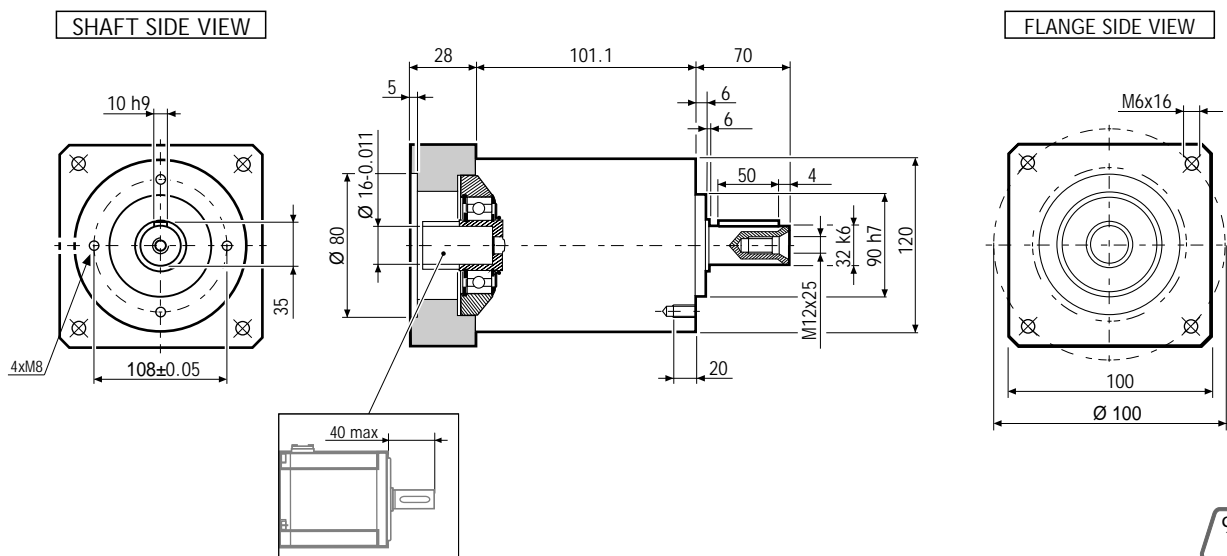
=12'

MADE IN ITALY

IP64

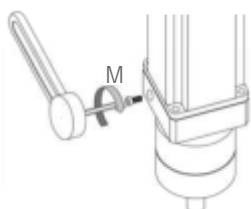


## Dimensions (Units:mm)



MODEL	Rated output torque [Nm]	Maximum acceleration output torque [Nm]	Emergency step output torque [Nm]	Backlash [arcmin]	Nominal input speed [min <sup>-1</sup> ]	Maximum momentary input speed [min <sup>-1</sup> ]	Torsional stiffness [Nm/arcmin]	Maximum radial force applying on output shaft [N]	Maximum axial force applying on output shaft [N]	Gear efficiency [%]	Gear moment of inertia [Kg·m <sup>2</sup> ]
SG-P11-120-010-12-R2-1000-00000	95	160	300	12'	3500	5000	25	3500	3000	97	0.49x10 <sup>-4</sup>

## Suggested motors



R2AAB8100 SERIES



MOUNTING OPERATION MODE: ■ Tightening torque M=11 Nm ■ Locking bolt M6 ■ R.T.A. Quality Control

# SG-P11-090-025-15-R2-0X00-00000

## PLANETARY GEARBOXES

SG 090

i=025

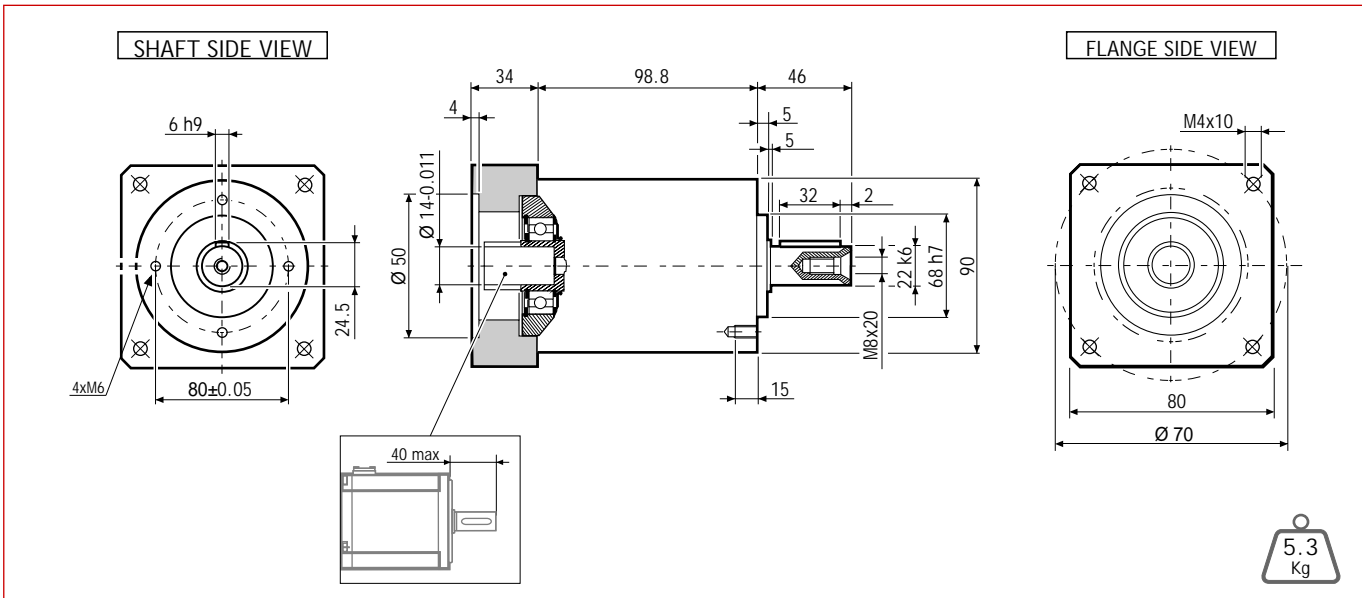
=15'

MADE IN ITALY

IP64



## Dimensions (Units:mm)



MODEL	Rated output torque [Nm]	Maximum acceleration output torque [Nm]	Emergency step output torque [Nm]	Backlash [arcmin]	Nominal input speed [min <sup>-1</sup> ]	Maximum momentary input speed [min <sup>-1</sup> ]	Torsional stiffness [Nm/arcmin]	Maximum radial force applying on output shaft [N]	Maximum axial force applying on output shaft [N]	Gear efficiency [%]	Gear moment of inertia [Kg·m <sup>2</sup> ]
SG-P11-090-025-15-R2-0X00-00000	43	80	160	15'	3200	4500	8.5	2200	1900	94	0.40x10 <sup>-4</sup>

## Suggested motors

MOUNTING OPERATION MODE: ■ Tightening torque M=11 Nm

R2AA06020 SERIES

■ Locking bolt M6

R2AA06040 SERIES

■ R.T.A. Quality Control

# SG-P11-120-025-15-R2-0750-00000

## PLANETARY GEARBOXES

SG 120

i=025

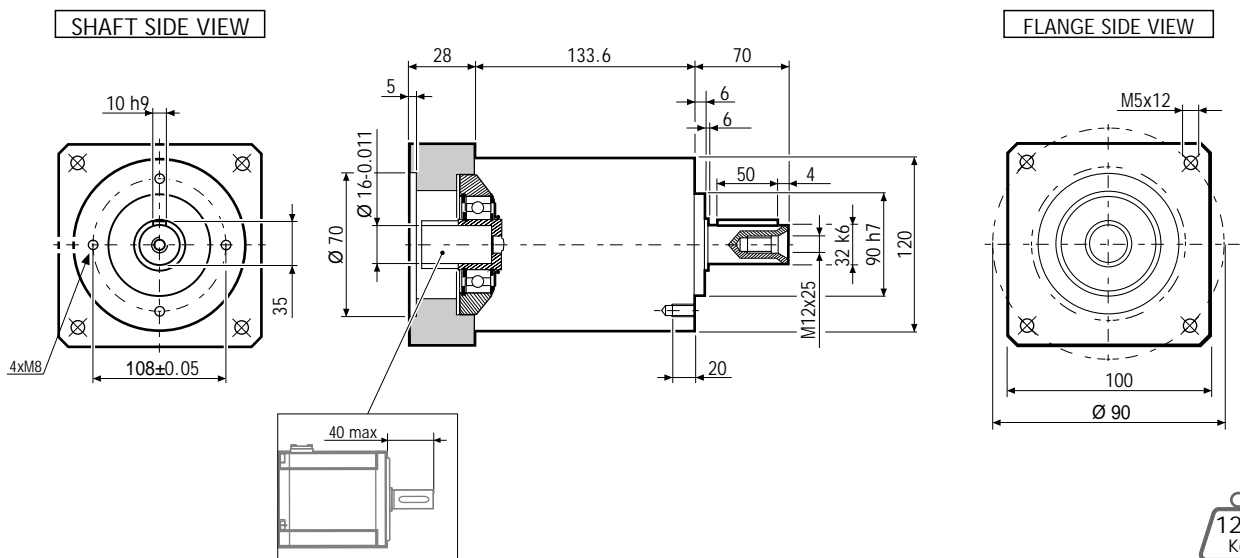
=15'

MADE IN ITALY

IP64

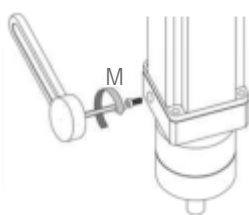


## Dimensions (Units:mm)



MODEL	Rated output torque [Nm]	Maximum acceleration output torque [Nm]	Emergency step output torque [Nm]	Backlash [arcmin]	Nominal input speed [min <sup>-1</sup> ]	Maximum momentary input speed [min <sup>-1</sup> ]	Torsional stiffness [Nm/arcmin]	Maximum radial force applying on output shaft [N]	Maximum axial force applying on output shaft [N]	Gear efficiency [%]	Gear moment of inertia [Kgm <sup>2</sup> ]
SG-P11-120-025-15-R2-0750-00000	110	190	360	15'	3000	4500	22.5	3500	3000	94	0.71x10 <sup>-4</sup>

## Suggested motors



R2AA08075 SERIES



MOUNTING OPERATION MODE: ■ Tightening torque M=11 Nm ■ Locking bolt M6 ■ R.T.A. Quality Control

# SG-P11-120-025-15-R2-1000-00000

## PLANETARY GEARBOXES

SG 120

i=025

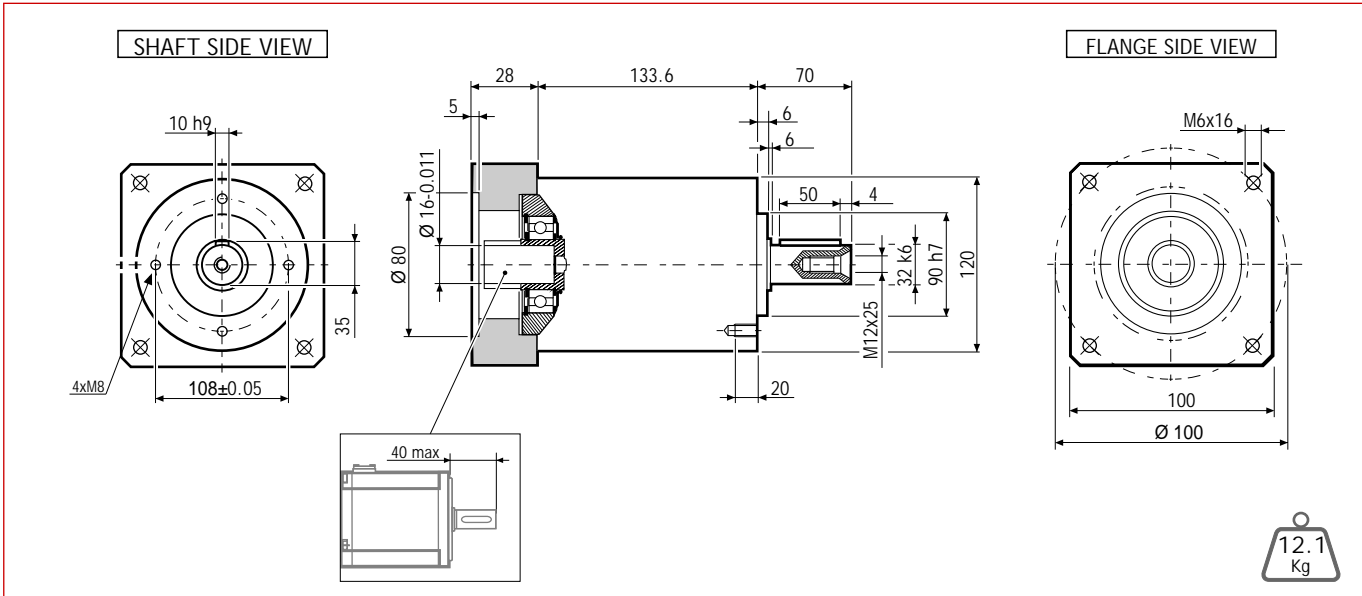
=15'

MADE IN ITALY

IP64



## Dimensions (Units:mm)



MODEL	Rated output torque [Nm]	Maximum acceleration output torque [Nm]	Emergency step output torque [Nm]	Backlash [arcmin]	Nominal input speed [min <sup>-1</sup> ]	Maximum momentary input speed [min <sup>-1</sup> ]	Torsional stiffness [Nm/arcmin]	Maximum radial force applying on output shaft [N]	Maximum axial force applying on output shaft [N]	Gear efficiency [%]	Gear moment of inertia [Kg <sup>m</sup> ²]
SG-P11-120-025-15-R2-1000-00000	110	190	360	15'	3000	4500	22.5	3500	3000	94	0.71x10 <sup>-4</sup>

## Suggested motors

R2AAB8100 SERIES

MOUNTING OPERATION MODE: ■ Tightening torque M=11 Nm ■ Locking bolt M6 ■ R.T.A. Quality Control

По вопросам продаж и поддержки обращайтесь:

Архангельск (8182)63-90-72  
Астана (7172)727-132  
Астрахань (8512)99-46-04  
Барнаул (3852)73-04-60  
Белгород (4722)40-23-64  
Брянск (4832)59-03-52  
Владивосток (423)249-28-31  
Волгоград (844)278-03-48  
Вологда (8172)26-41-59  
Воронеж (473)204-51-73  
Екатеринбург (343)384-55-89

Иваново (4932)77-34-06  
Ижевск (3412)26-03-58  
Казань (843)206-01-48  
Калининград (4012)72-03-81  
Калуга (4842)92-23-67  
Кемерово (3842)65-04-62  
Киров (8332)68-02-04  
Краснодар (861)203-40-90  
Красноярск (391)204-63-61  
Курск (4712)77-13-04  
Липецк (4742)52-20-81

Магнитогорск (3519)55-03-13  
Москва (495)268-04-70  
Мурманск (8152)59-64-93  
Набережные Челны (8552)20-53-41  
Нижний Новгород (831)429-08-12  
Новокузнецк (3843)20-46-81  
Новосибирск (383)227-86-73  
Омск (3812)21-46-40  
Орел (4862)44-53-42  
Оренбург (3532)37-68-04  
Пенза (8412)22-31-16

Пермь (342)205-81-47  
Ростов-на-Дону (863)308-18-15  
Рязань (4912)46-61-64  
Самара (846)206-03-16  
Санкт-Петербург (812)309-46-40  
Саратов (845)249-38-78  
Севастополь (8692)22-31-93  
Симферополь (3652)67-13-56  
Смоленск (4812)29-41-54  
Сочи (862)225-72-31  
Ставрополь (8652)20-65-13

Сургут (3462)77-98-35  
Тверь (4822)63-31-35  
Томск (3822)98-41-53  
Тула (4872)74-02-29  
Тюмень (3452)66-21-18  
Ульяновск (8422)24-23-59  
Уфа (347)229-48-12  
Хабаровск (4212)92-98-04  
Челябинск (351)202-03-61  
Череповец (8202)49-02-64  
Ярославль (4852)69-52-93

Единый адрес: [rbt@nt-rt.ru](mailto:rbt@nt-rt.ru) | <http://rta.nt-rt.ru>